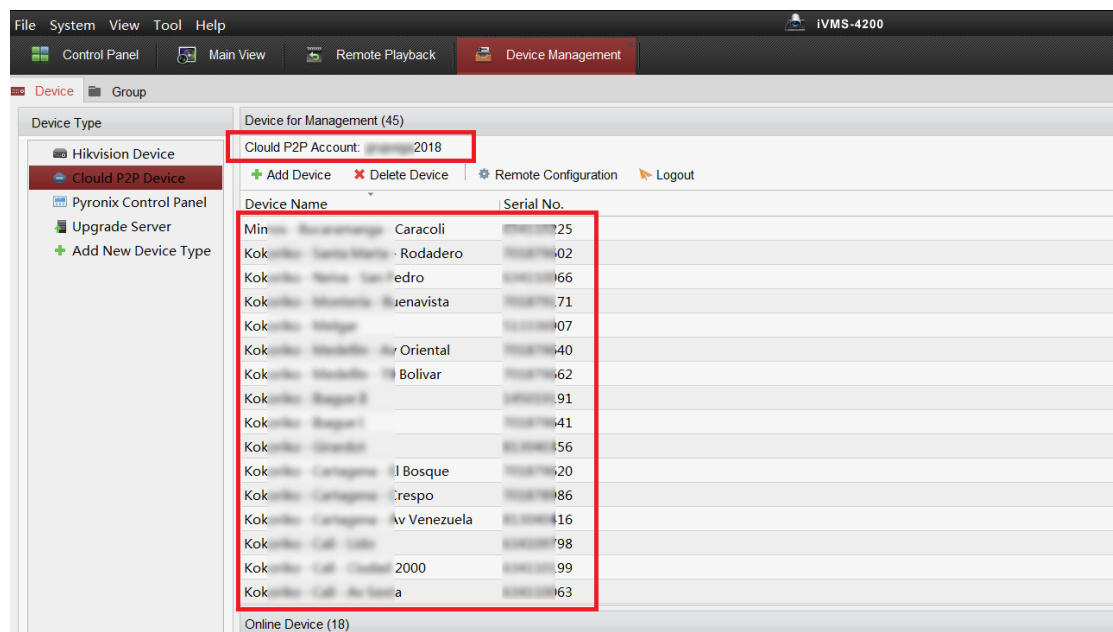
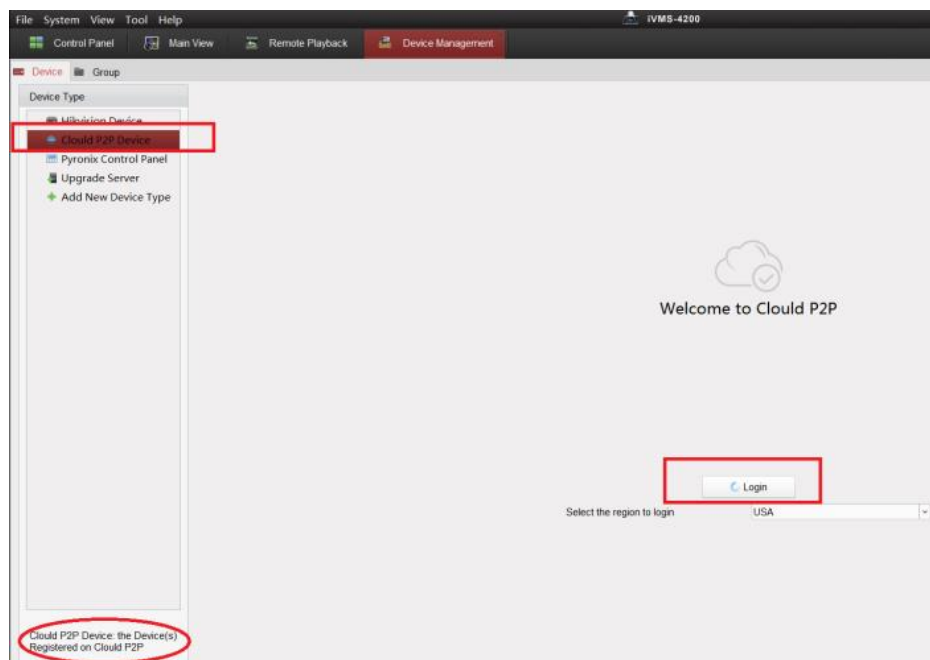


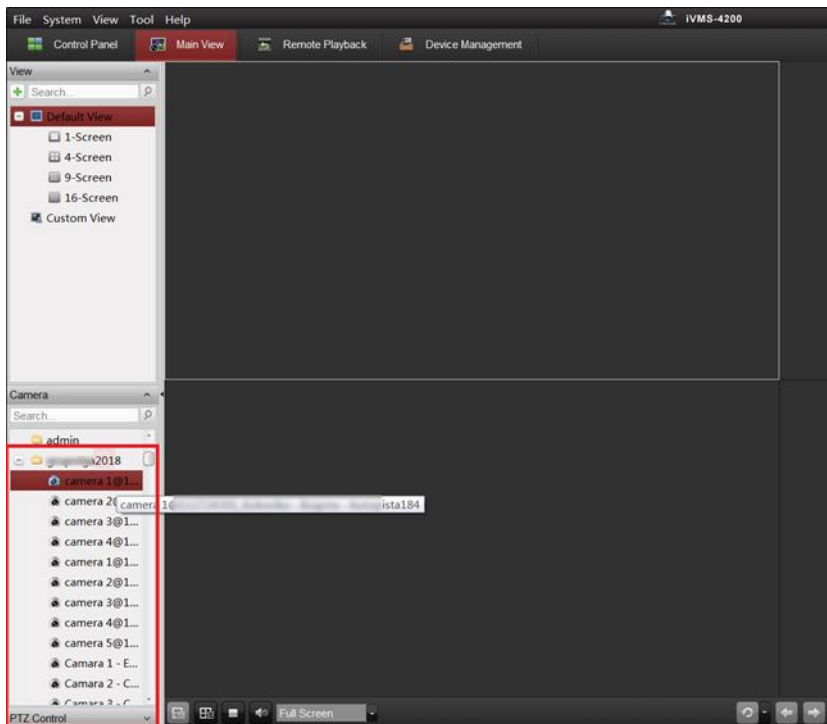
How to use Cloud P2P and Cloud P2P Domain in iVMS-4200

Hik-Connect service provides mainly two functions, one is cloud P2P function which needs customer adds device via serial number and verification code, the other is Hik-Connect domain which allow customer to use Hik-Connect dynamic domain name service. In iVMS-4200, customer can add devices via cloud P2P or cloud P2P domain which is known as Hik-Connect domain. The following is the main differences between Cloud P2P and Cloud P2P Domain on 4200 client.

1. Cloud P2P

We can log in the Hik-Connect account on iVMS-4200 and use the basic function like live view and playback.

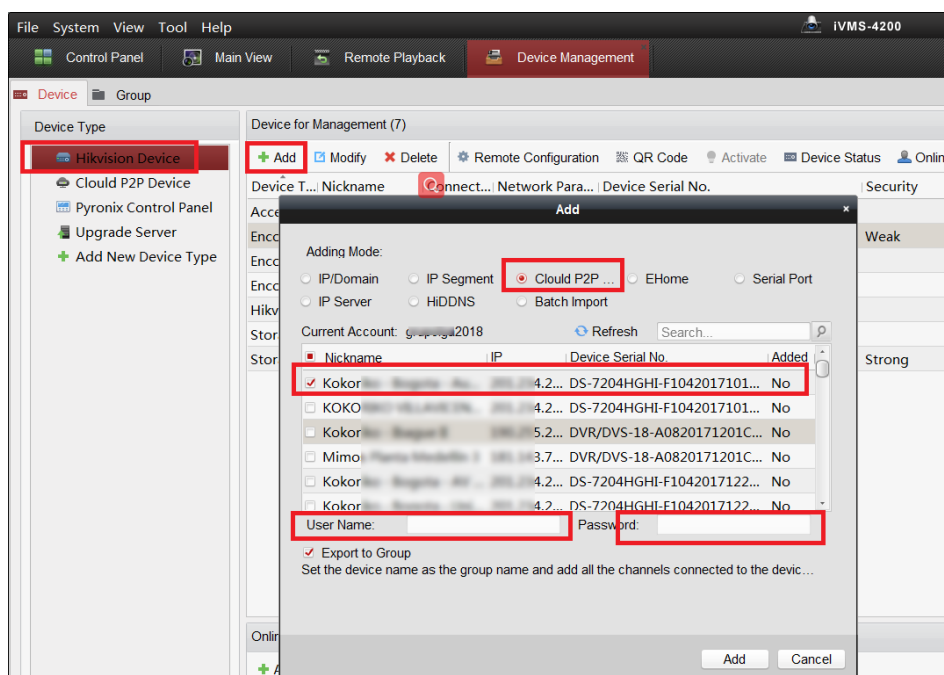




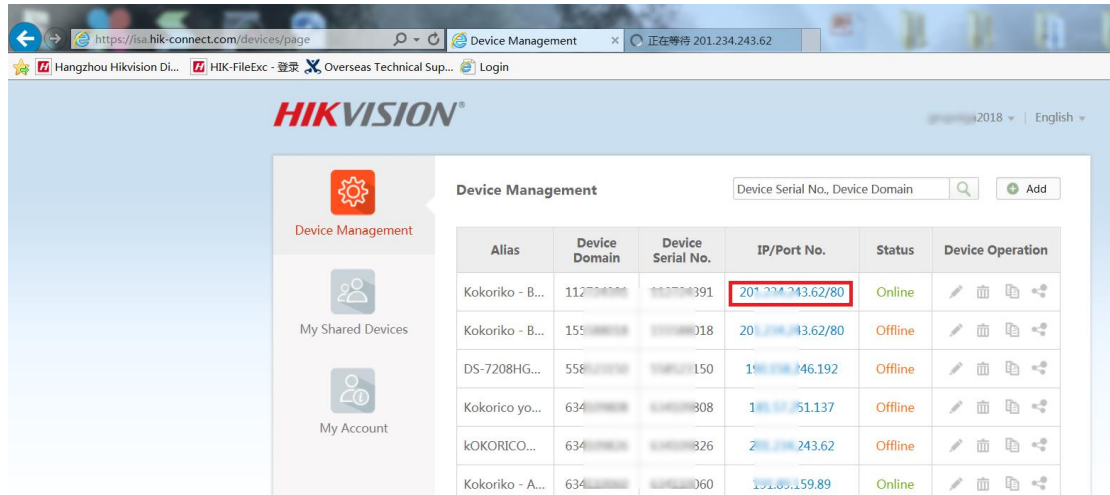
2. Cloud P2P Domain

Cloud P2P Domain is a way to add devices in Hik-Connect local module. The Principle of this way is to resolve the device's domain name through the Hik-Connect server, the server will return the device's corresponding IP address and port, and then we can access the device through the router's external IP and port. (Before using Cloud P2P Domain, you need to open ports in router, include port 80,8000,554.)

The device can be added to the iVMS-4200 by Hik-Connect Domain as well. Devices added by Cloud P2P domain have more functions compared with devices added by CloudP2P. It has the same function as that added by IP.



If error code [7] (Connecting to device failed, device offline or time-out) or error code [119] (The device DNS error) occurs after you add the device through Cloud P2P Domain, you can log on to <https://www.Hik-Connect.com> to get the devices IP address and ports. **Only if you can successfully jump to the website of the device and the server port of the device is forwarded in router, the device can be online on 4200.**



The screenshot shows the Hikvision Device Management web interface. The page title is "Device Management" and it includes a search bar for "Device Serial No., Device Domain" and an "Add" button. A sidebar on the left contains navigation options: "Device Management", "My Shared Devices", and "My Account". The main content area displays a table of devices with the following columns: Alias, Device Domain, Device Serial No., IP/Port No., Status, and Device Operation. The first row in the table has the IP address "201.234.243.62/80" highlighted with a red box, and its status is "Online".

Alias	Device Domain	Device Serial No.	IP/Port No.	Status	Device Operation
Kokoriko - B...	1127000000	0000000391	201.234.243.62/80	Online	[Edit] [Delete] [Share]
Kokoriko - B...	1550000000	0000000018	201.234.13.62/80	Offline	[Edit] [Delete] [Share]
DS-7208HG...	5580000000	0000000150	192.168.146.192	Offline	[Edit] [Delete] [Share]
Kokorico yo...	6340000000	0000000808	192.168.51.137	Offline	[Edit] [Delete] [Share]
kOKORICO...	6340000000	0000000326	201.234.243.62	Offline	[Edit] [Delete] [Share]
Kokoriko - A...	6340000000	0000000060	192.168.159.89	Online	[Edit] [Delete] [Share]

Attention: 4200 for mac has not supported the live view and playback in cloud P2P. On mac, you can only add device to 4200 by Hik-Connect Domain. For further information, refer to the release note of mac V1.02.05.02.